



ONE
PALM

) (*Dorchester Collection*

DUBAI



ONE OF A KIND



THE ULTIMATE ADDRESS

Completed in 2006, Palm Jumeirah is unquestionably Dubai's most spectacular location and a world icon. A marvel of modern engineering, the island boasts pristine beaches surrounded by the crystal blue waters of the Arabian Gulf - a prime destination for those who can appreciate an ultra-exclusive lifestyle. This one-of-a-kind setting now features a remarkable collection of stunning residences at its most prime position. Omniyat is proud to present One Palm.

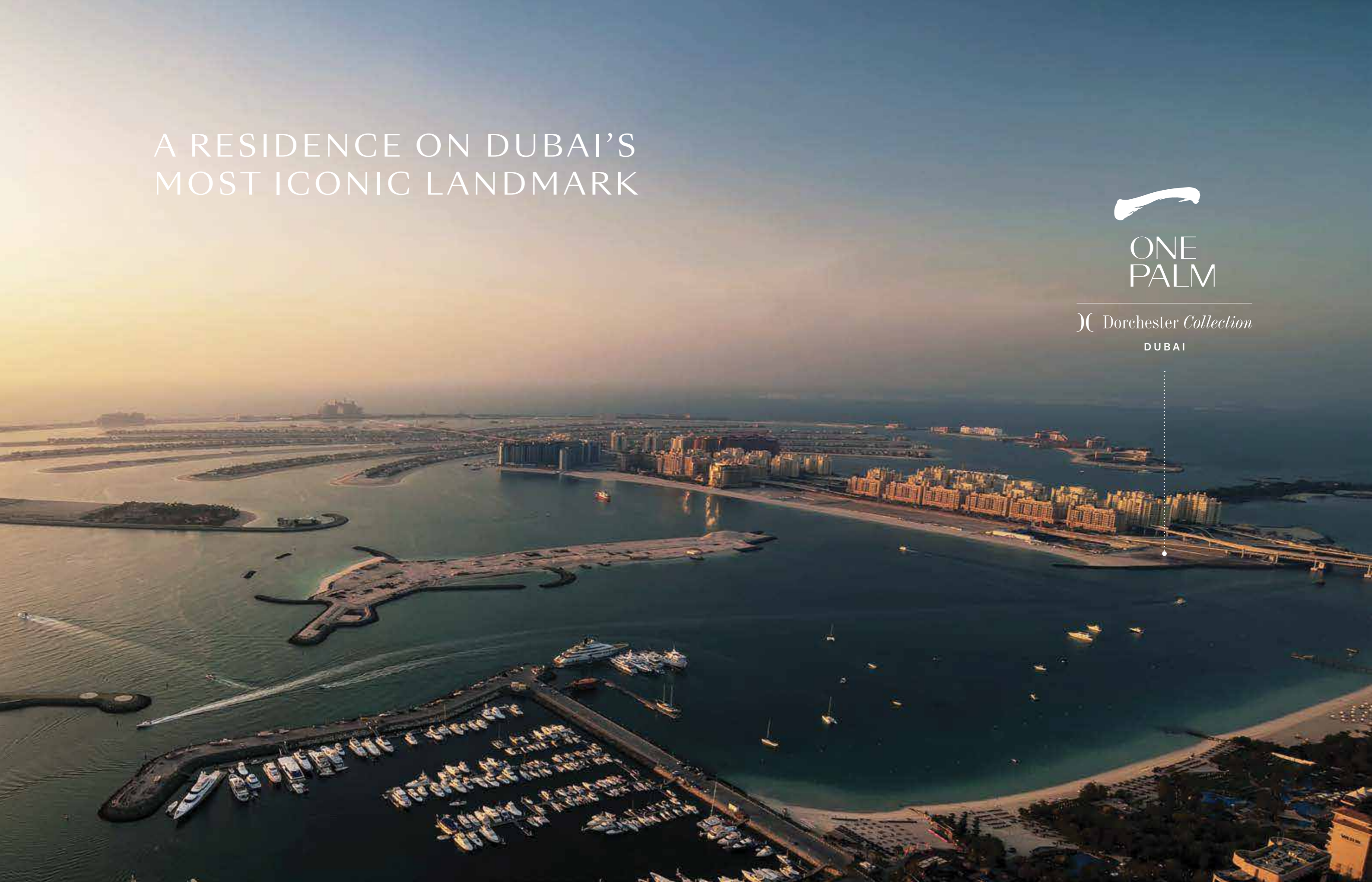
A RESIDENCE ON DUBAI'S
MOST ICONIC LANDMARK



ONE
PALM

Dorchester Collection

DUBAI



AT THE CENTRE OF THE VERY BEST OF DUBAI

- | | | | |
|-----------------------|---|---|-------------------------|
| BURJ AL ARAB | 1 | 5 | ATLANTIS, THE PALM |
| ONE & ONLY THE PALM | 2 | 6 | SOFITEL HOTEL, THE PALM |
| JUMEIRAH ZABEEL SARAY | 3 | 7 | WALDORF ASTORIA DUBAI |
| KEMPINSKI HOTEL | 4 | 8 | RIXOS, THE PALM DUBAI |





ONE OF A KIND

One Palm is a completely re-imagined approach to elegance and exclusivity. Iconic architecture, sprawling layouts, unbeatable amenities, lush green spaces, and the most sought-after interior features make One Palm more than a residence – a veritable masterpiece of artful design and the pinnacle of luxurious living in all its aspects.

An aerial view of a modern, multi-story residential building with glass facades and balconies, overlooking a beach and a city skyline at sunset. The building features multiple levels of balconies with glass railings and some greenery. The background shows a city skyline with several tall buildings, a beach with palm trees, and a swimming pool in the foreground. The sky is a mix of blue and orange, indicating sunset or sunrise.

A LIMITED COLLECTION
OF 94 ULTRA-EXCLUSIVE
HOMES, DESIGNED FOR
LIFE LIVED IN INFINITE
ABUNDANCE

A STRIKING EDIFICE BEFITTING A WORLD- FAMOUS LANDMARK

With a stunning city skyline and the unmistakable Palm Jumeirah set upon the glimmering Arabian Gulf as a backdrop, this is your home at the world's most thrilling location. Each spectacular, light-filled residence evokes inspiration around every corner. One Palm offers a new level of sumptuous indulgence, for connoisseurs of perfection.



The timeless elegance of your home at One Palm deserves a backdrop that sets it off like a precious jewel in an elegant setting. Floor-to-ceiling glass enables you to look out over sweeping, 360-degree vistas of the Gulf and the exciting Dubai skyline in an inspiring, ever-changing display of sea, sky and light.

UNLIKE ANYTHING BEFORE IT



An aerial photograph of a speedboat moving across the ocean, leaving a white wake. The water is a deep blue, and the sky is a bright, hazy yellow. Overlaid on the image is the word "ABOVE" in large, gold, serif capital letters. The letters are stylized with thick strokes and some overlapping. The 'A' is at the top, 'B' is to its right, 'O' is below 'A', 'V' is below 'B', 'E' is to the right of 'V', and 'E' is below 'O'.

ABOVE

ABOVE IT ALL

Cutting-edge architecture, exclusively designed luscious interiors, the seamless coherence of privacy and association, make your home at One Palm truly a cut above everything else. But what makes One Palm even more spectacular is the sense of freedom, infinity and true bliss that comes from enjoying daily views that encompass everything on the horizon and beyond.



MANAGED BY

) (*Dorchester Collection*

ONE PALM IS MANAGED
BY DORCHESTER COLLECTION,
A 5-STAR HOTEL OPERATOR WITH
A PORTFOLIO THAT BOASTS THE
WORLD'S FOREMOST LUXURY
HOTELS IN EUROPE AND THE USA.



ONE PALM

Dorchester Collection

DUBAI

Dorchester Collection, established in 2006, is one of the most prestigious luxury hotel management companies, with an impressive portfolio that includes nine of the world's finest and most iconic hotels in Europe and the USA.

Each hotel is an icon in its own right, a unique creation by world-renowned artists and designers, combining luxurious décor, bespoke furniture and art, masterful craftsmanship and superior design that harmonizes tradition with modernity.

Dorchester Collection is renowned for its passion for excellence and innovation. The hotels embody the culture of each city, honoring its heritage and unique style, while simultaneously bringing out a modern kind of individuality through contemporary styling and state-of-the-art facilities.



THE DORCHESTER, LONDON



EFFORTLESS LIVING

One Palm offers its esteemed residents the total convenience of the superb A la carte Services, making everyday living absolutely effortless.

You have at your disposal a range of services, from classics such as maintenance, doorman and valet parking, to premium services that include housekeeping, in-residence catering, unique dining events, and a butler.

The exclusive concierge is here to assist with an expert tailored selection of dining choices, events, venues, tickets, and everything else you need for a dynamic social and cultural life in the city.

—— CLASSIC ——

COMMON AREA
MAINTENANCE AND CLEANING

CONCIERGE SERVICES

VALET PARKING

LIFEGUARD AND GYM SERVICE

SECURITY SERVICES

—— A LA CARTE ——

HOUSEKEEPING, LAUNDRY,
MAINTENANCE, BESPOKE IN-RESIDENCE
CATERING SERVICES

ONE-OFF DINING EVENTS, FUNCTIONS



HOTEL BEL-AIR, LOS ANGELES

HÔTEL PLAZA ATHÉNÉE, PARIS

Dorchester Collection proudly encompasses the best locations in the world, including Park Lane in London, Sunset Boulevard in Beverly Hills, rue de Rivoli and avenue Montaigne in Paris, Via Ludovisi, Piazza della Repubblica in Milan, Stone Canyon Road in Los Angeles and Ascot in Berkshire.

They are the only luxury hotel company in the world with a consistent portfolio of truly iconic properties.

Dorchester Collection hotels are favoured by celebrities, world leaders, royalty and high society - in each city they are quite simply the place to be.



45 PARK LANE, LONDON



LE MEURICE, PARIS



COWORTH PARK, ASCOT



HÔTEL PLAZA ATHÉNÉE, PARIS





MAJESTIC ARRIVAL

Every trip home to One Palm is an occasion of unparalleled exhilaration, as the automated gates open to reveal a stunning layout featuring reflection pools and waterfalls.

Drive up to your residence in style along a pristine courtyard lined with signature artistic centrepieces from the world famous landscape architect, Vladimir Djurovic.

The beautiful panorama leads straight to the upper ground floor with a convenient and private valet drop-off area.



EXCLUSIVE ACCESS

As you make your way up to the spectacular lobby of One Palm, your car is taken down to its spacious parking place. In a building of 94 exclusive units, One Palm features over 400 car parks.

Supersized spots ensure your high performance machine or vintage beauty has ample space. The parking area also includes particular zones clearly marked for charging batteries and car grooming.





Breathtaking
Welcome

ONE
PALM

An aerial photograph of a luxury villa on Palm Jumeirah. The villa is surrounded by lush greenery, including numerous palm trees and other tropical plants. A private jetty extends into the Arabian Gulf, where a large white yacht is docked. The villa features a swimming pool and a stone-paved area. The text is overlaid on the lower left portion of the image.

ONE PALM'S IDEAL POSITION AT
THE TRUNK OF PALM JUMEIRAH
PROVIDES RESIDENTS A
PRIVATE JETTY FOR ARRIVAL
BY SEA DIRECTLY FROM THE
ARABIAN GULF.





“OUR
GUIDING
DESIGN
PHILOSOPHY
IS TO PUT
NATURE
AT CENTER
STAGE”

— Vladimir Djurovic

Moving up through the building from the lower ground floor through to the exquisite penthouse gardens, the character of the landscape changes from shaded, earthy and textured to open, airy and luminous. Water is also a constant feature throughout this unprecedented residence. With water mirrors in the main lobby, and glistening and soothing elements throughout, you'll get the feeling of being in a modern oasis of luxury.



BREATHTAKING DRIVE

The grand, cobblestone drive of One Palm is set off by, and contrasts with, the clean lines and angularity of a stunning, modern water feature. Punctuated by shade trees, plantings and stone slab bridges that invite interaction, the drive is a memorable experience for visitors and residents alike.



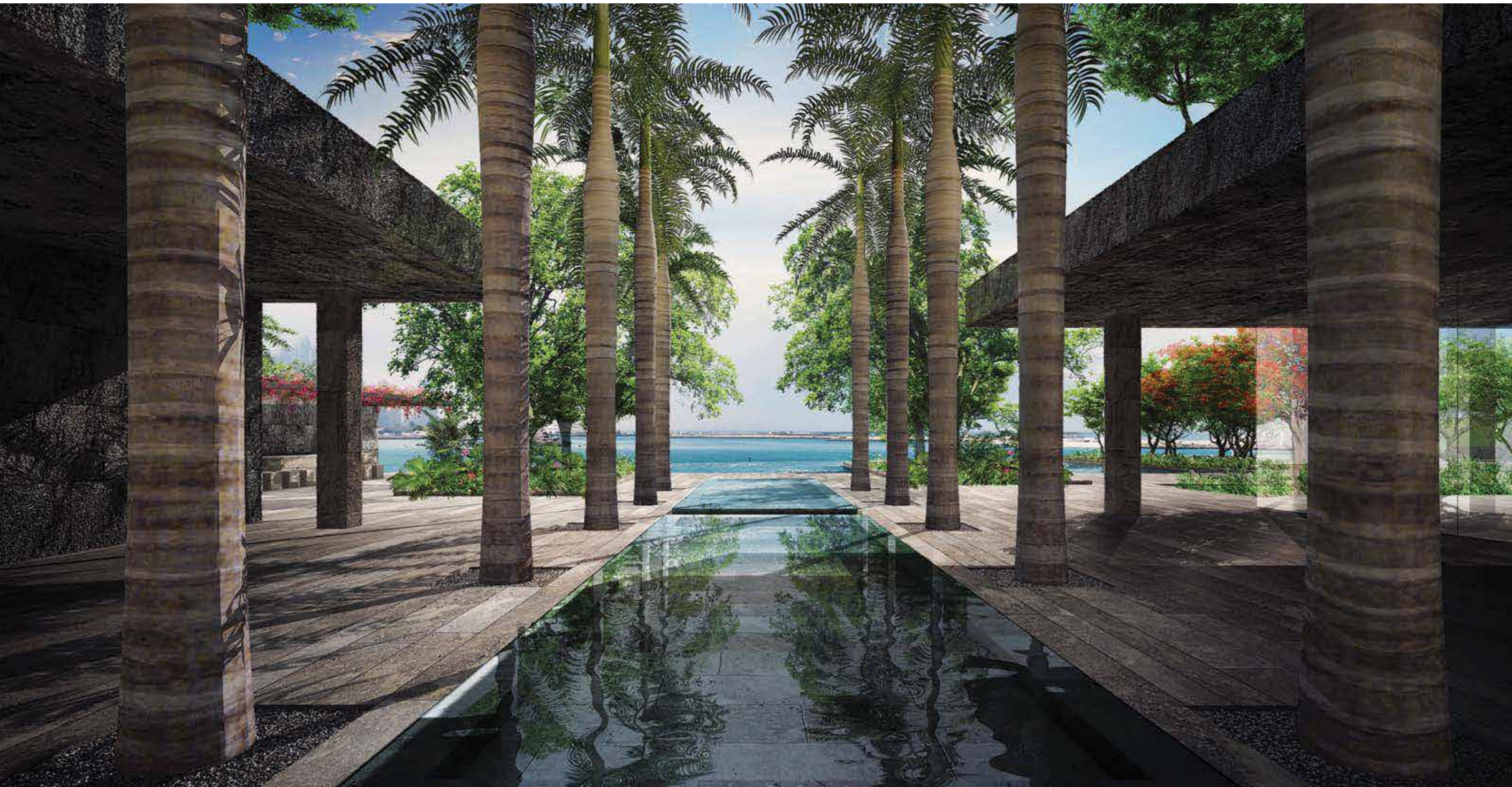
EXOTIC VEGETATION

The building emerges from a tropical forest that extends all the way to the beach. Lush gardens with dense, exotic vegetation offer a shaded environment around a series of water elements that frame the architecture.



TROPICAL FOREST



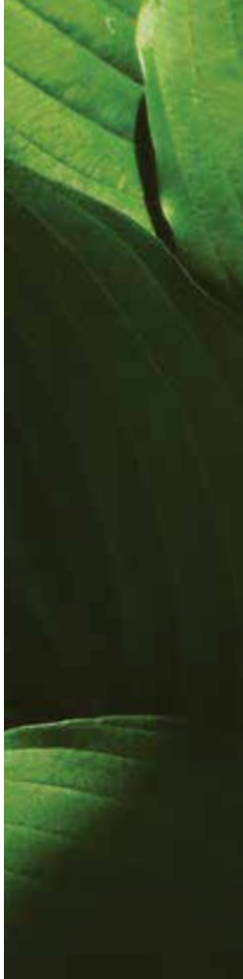




A photograph of a modern apartment terrace. On the left, a tall, dense vertical garden wall is covered in various green plants. In the center, a large, leafy tree stands on a concrete platform. To the right of the tree, a curved, woven lounge chair is positioned. The terrace floor is made of light-colored concrete. In the background, a modern building with large glass windows and a balcony is visible. The sky is clear and blue.

LUXURIOUS LIVING

Once we move up to the apartment terraces, the textures and materiality turn more architectural following those of the interior. The building offers gardens for luxurious outdoor living to its residents in their own private terraces. Vegetation, green screens and water elements enrich the outdoor living experience of these spaces.



THE PERFECT BALANCE OF LUXURY AND TRANQUILITY


The outdoor terraces of each One Palm home are a site to behold. Framed by inspiring views of the Arabian Gulf and the city beyond, they feature refreshing plunge pools, ample space for relaxing or entertaining, and natural touches that sooth and relax. The terraces are indeed an ultra-luxurious feature, the symbol of a unique kind of freedom and unsurpassable level of comfort.





BRILLIANTLY HANDCRAFTED

The residences at One Palm are crafted, carefully considered environments, melding the energy at the heart of one of the world's most dynamic, young cities with the tranquility and solitude of a unique, inspiring sanctuary. Two of the world's most forward-thinking firms, Super Potato and Elicyon, have brought to life their own unique, yet symbiotic visions – each a masterpiece of interior design. Each space takes its cues by looking both outward to reflect the vibrant spirit of Dubai, while looking inward at the unique character of those who will find their refuge here, creating extraordinary homes that are a celebration of life lived to the fullest.



WELCOME TO A WORLD
WITHIN A WORLD. YOUR WORLD,
BEARING YOUR DISTINCTIVE
SIGNATURE OF ELEGANCE AND
EXCLUSIVITY, WHILE OFFERING
PEACE AND SECURITY TO ALL
WHO ENTER AND LIVE HERE.



Conceived to allow for easy access and interaction within the development or complete privacy for those seeking solitude, One Palm's three separate cores include private and semi-private lift lobbies leading to no more than two residences. From the moment you alight onto your personal lift lobby, your senses are treated to a feast of details, brilliantly handcrafted into forms that are familiar, calming and pleasing to the soul. Each piece of fine furniture, each object d'art is custom curated by you, with the careful eye and guidance of true masters of interior design.

NATURAL DESIGN

BY SUPER POTATO

NATURAL AESTHETIC

Based in Japan, the internationally acclaimed design firm Super Potato is renowned for fashioning spaces that blend an Asian sensibility while celebrating the unique character of each project's location. For their design, they use natural stone and woods with glass and steel to craft a minimalist environment that is surprisingly warm and inviting. Rounded, highly tactile forms that hearken back to George Nakashima, Isamu Noguchi and other mid-century modern classics can be found in the furniture and fittings.



"The original inspiration for One Palm comes from the use of stone, wood, metal and glass to create the feeling of living in the air and living amongst nature. We restructured the visual and physical attributes of materials found from legendary Japanese architecture and tearooms – iron, timber, natural stone, and bricks – to incorporate into our design to enhance the beauty of the space. I believe this is a new method of expressing natural forms. Furthermore, the importance of our design is the feeling of natural changes around us such as water, clouds, wind and light and how to express these feelings through design."

M. Sugimoto

Takashi Sugimoto
President
SUPER POTATO CO. LTD.





NATURAL DIVERSITY

The striking architectural edifice of One Palm belies the surprising tranquility enveloping the inviting, expansive interior spaces of its common areas. Their calming, minimalist yet elegant feel has been meticulously planned by famed interior firm Super Potato.

Floor to ceiling windows flood the living area with light by day, as well as truly awe-inspiring views by night.

The feeling is expansive and impressive, yet completely comfortable and inviting.



INTIMATELY BEAUTIFUL

The Super Potato designed apartment is opulent yet refined, delicate yet bold, soothing yet inspiring. Its beauty is achieved through many interconnected layers and elements.

Intimate, diverse and soothing lighting, tasteful and elegant ornaments, inspiring artwork, different yet compatible materials and textures are just some of the elements that come together to create a lovely interplay of grace and timeless elegance.







The natural design and intimate feel of the penthouse comes to life strikingly in the living area.

The impressive feature wall invokes tradition and erudition, where culture and art are an integral and pivotal element of everyday life.

The view displays simultaneously the majesty of nature and the ingenuity of manmade creation, the contrast between the sea and the sky, the modernity of Dubai and the infinity of the horizon.

The comfortable, discreet furniture creates a cosy space where one can contemplate, admire and be inspired.

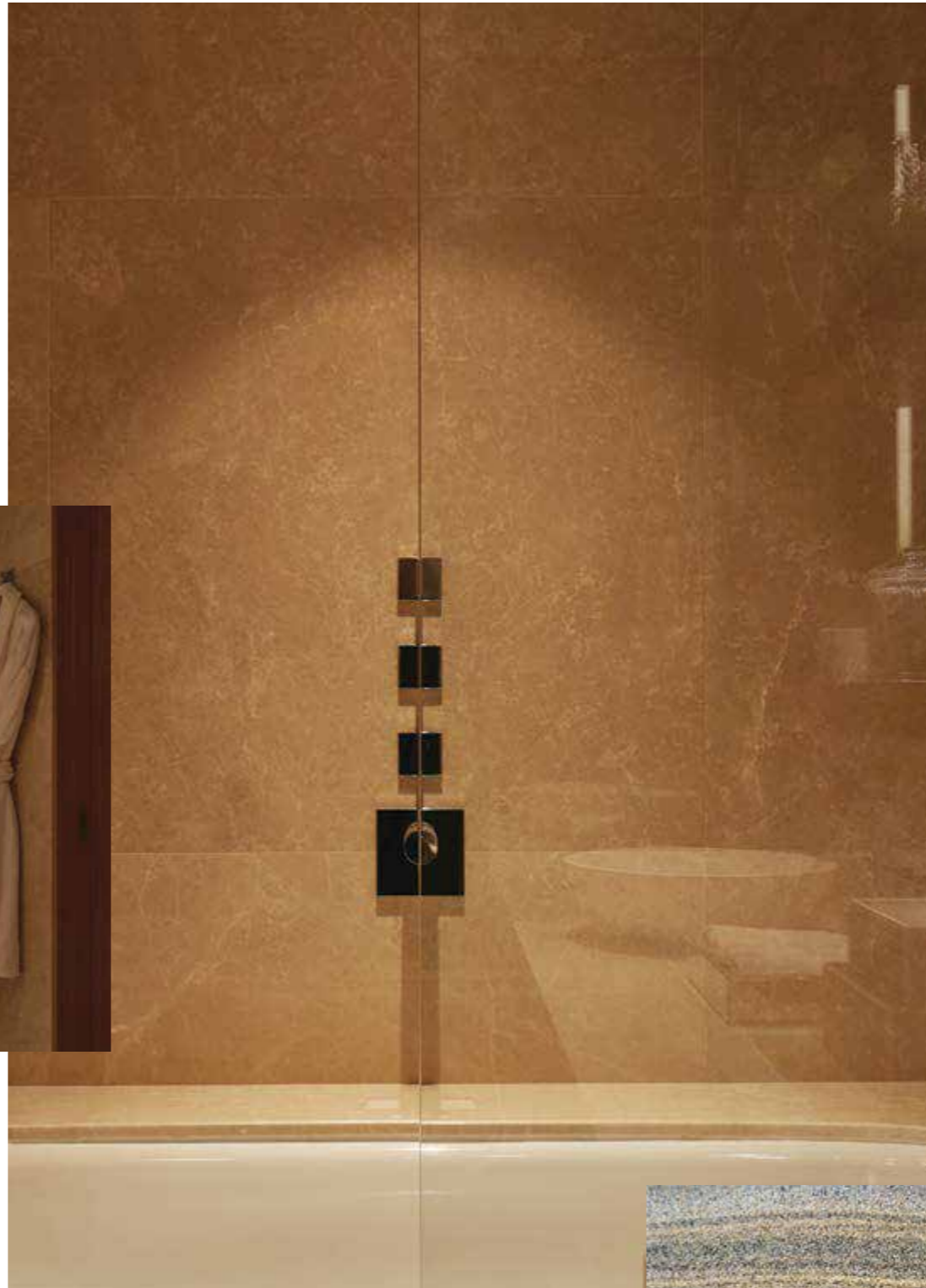




Beyond ample storage for your wardrobe, the generous walk-in closets have views that amaze and invigorate.

PURE DESIGN

The understated elegance of the master bath melds a Zen-like, minimalist feel with the warmth of wood and stone elements.



Blissfully Calm









A thoroughly intimate terrace, replete with furnishings and a colour palette that induce a perfect sense of calm and serenity.



Relaxing Design

TIMELESS DESIGN

by Elicyon

MINIMALIST AESTHETIC

Acclaimed designers of London's One Hyde Park, Elicyon creates unique, customized spaces that elevate luxury interior design to an artform. The interior scheme in the penthouse conceptualized by Elicyon is sophisticated and modern, complementary in all aspects to the breathtaking panoramic beach views.

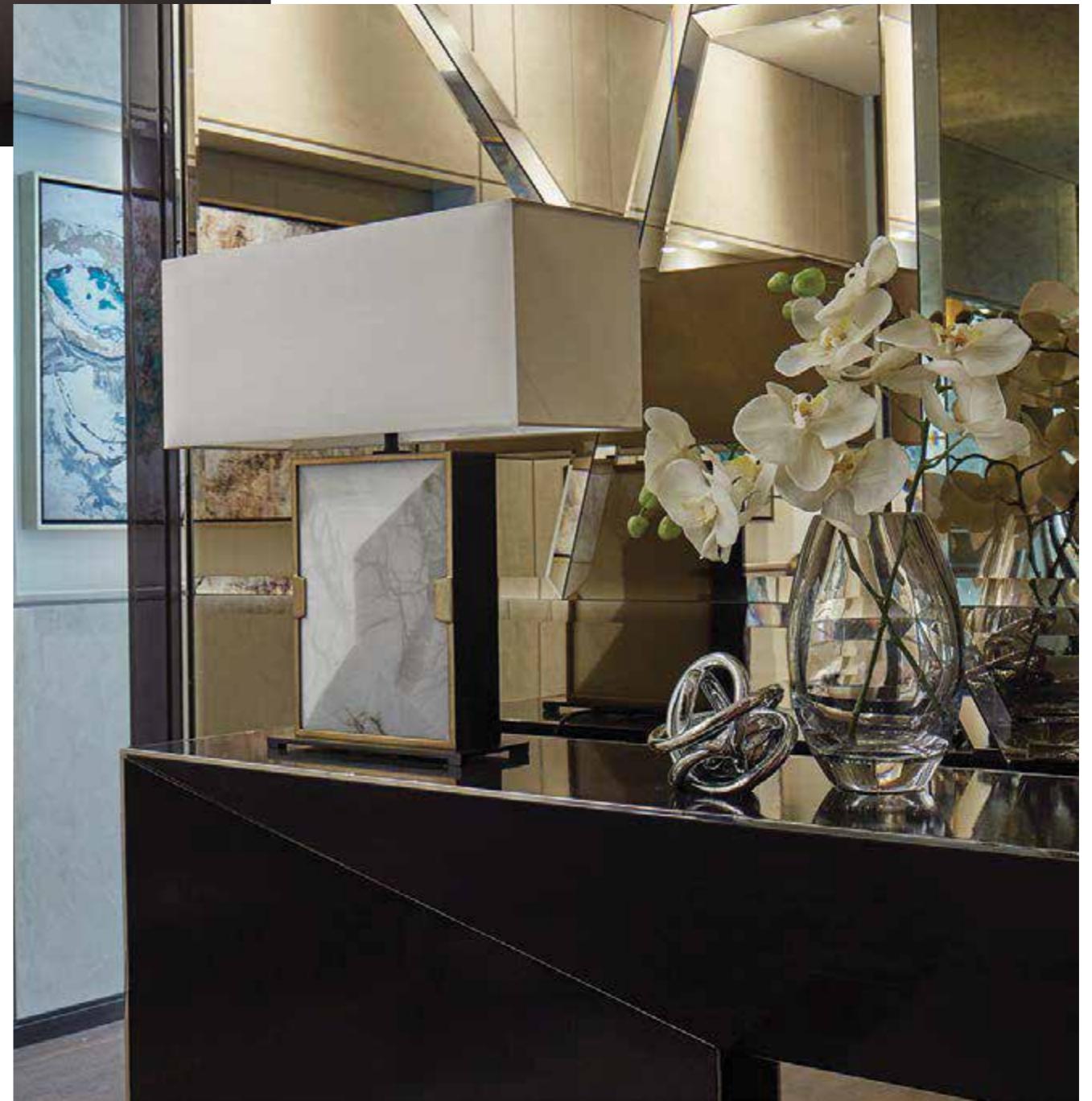
Natural materials and finishes, from lacquered wood and leather to stone and silk, converge in a glamorous, streamlined fashion. Elicyon's minimalist aesthetic highlights the interplay of interior and exterior motifs, in a timelessly stunning look.





The entrance to the Elicyon-designed apartment reflects and introduces the key elements of their world-renowned design and showcases their ingenuity in mimicking the natural landscape through interior spaces.

Diverse elements, materials and textures, such as smooth marble, different forms and shapes of glass and crystal, and diverse sea-inspired hues establish a continuity between the interior space and the stunning exterior landscape that inspired it.



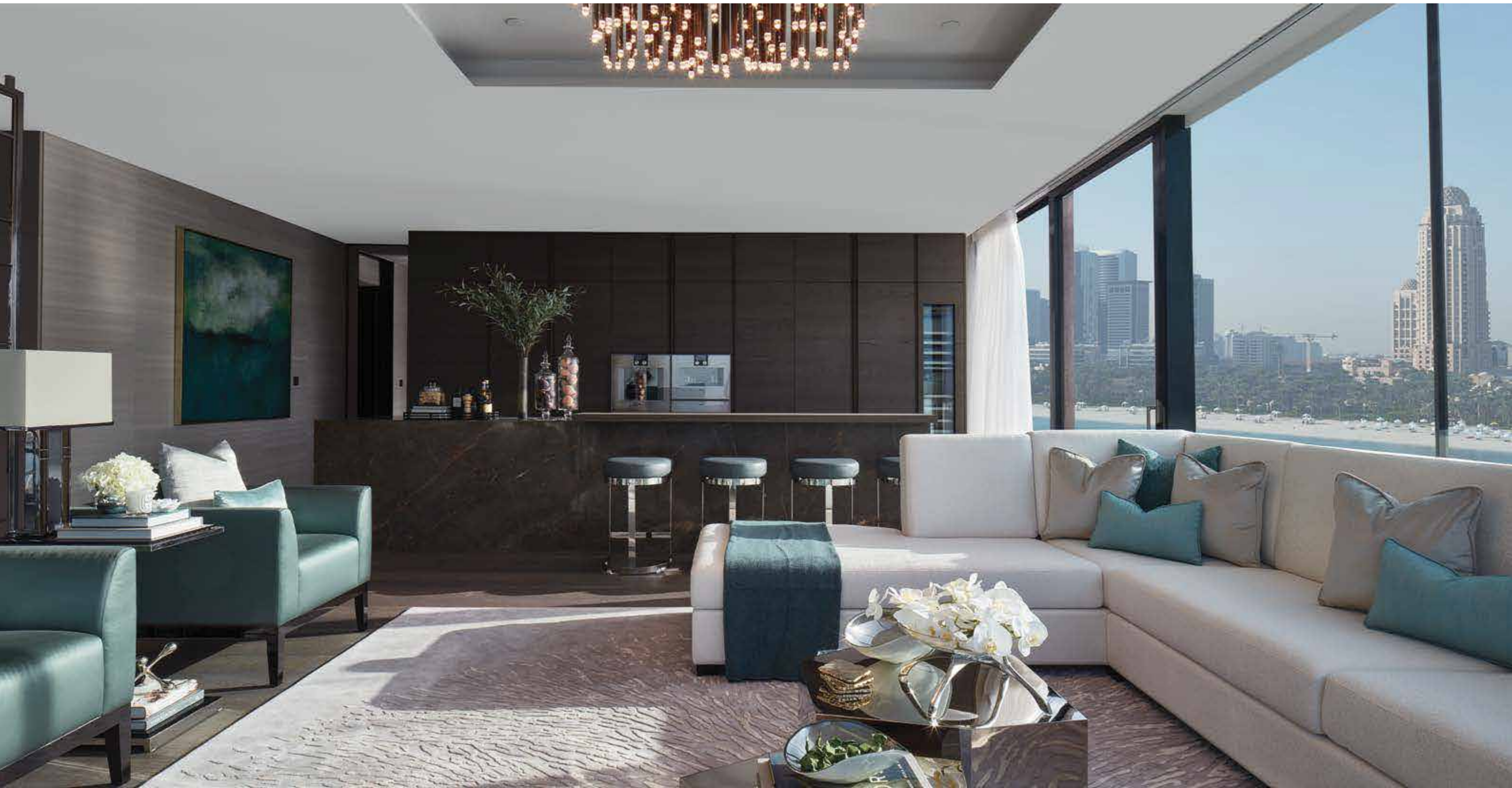


"THE BIGGEST
PIECE OF ART IN THIS
PROPERTY IS THE VIEW"

— Charu Gandhi

Architect, Founder and Director of Elicyon

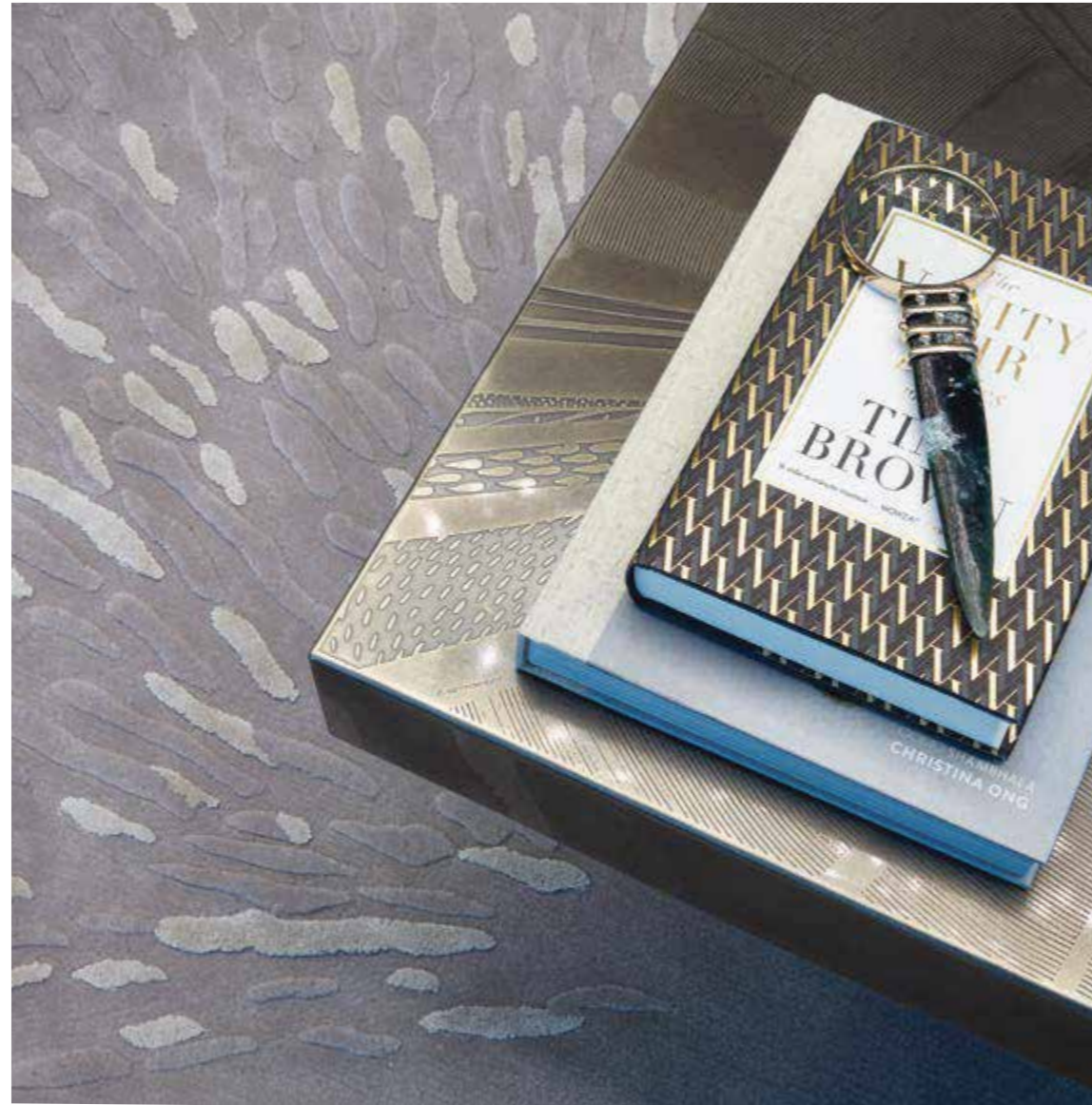












"FOR ME, THIS SPACE CULMINATES
IN THE SCREENS AND THE ARTWORK
FRAMING THE STUNNING VIEWS.
ALL SEEN THROUGH THE LENS OF
BEAUTIFUL TEXTURES AND MATERIALS"

— Charu Gandhi
Architect, Founder and Director of Elicyon

The double living room is exquisite and magical. The splendid pieces of furniture, glass and metalwork, emerald greens and vintage metal are all bespoke and commissioned specifically for this extraordinary space.

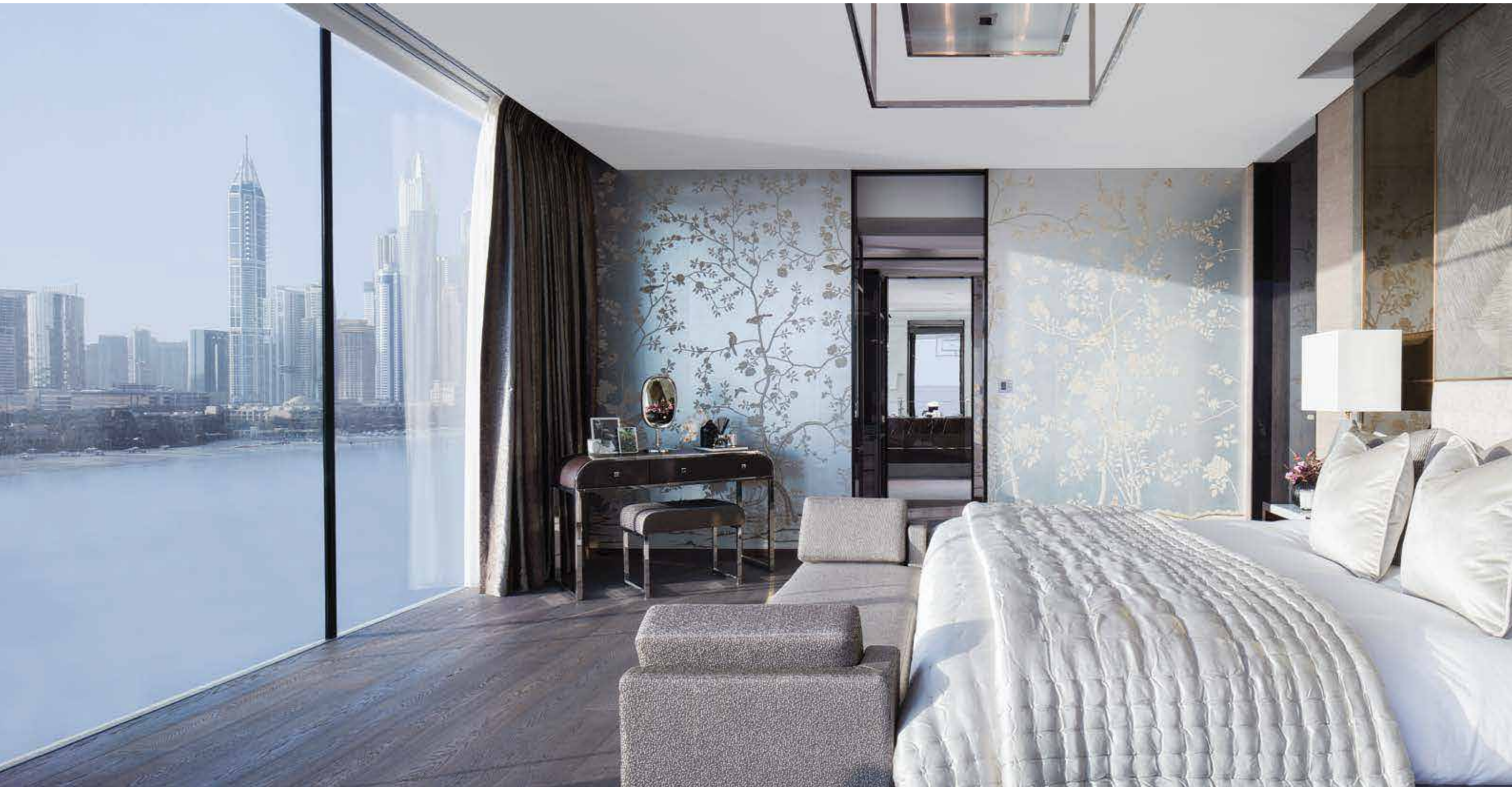
The stunning feature wall divides the sprawling living room into a more formal section, perfect for entertaining, open to the world both from inside and outside, and a second, more intimate, pensive, and comfortable space.

THE COMFORT OF STYLE

This secluded yet transparent nook is created through the playful use of an abstract arabesque pattern in the mashrabiya screens. The design creates a reference to traditional Middle Eastern architecture, creating an intimate space. Its simple, minimalist design allows for order and clarity, inspires work and efficiency, providing the possibility both to connect and disconnect, depending on your business, work or study needs.







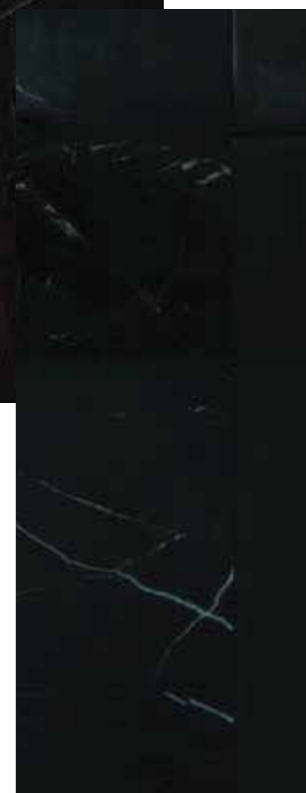




The luxury wardrobe space is specifically designed to protect your essentials, but also to display and reflect your unique sense of style.

AFFLUENCE EMBODIED

One of the top luxurious features of the sleek and elegant bathroom is the generous bathtub with a front-row view of the sea, the sky and the city - indeed a hallmark of truly affluent living.







Elicyon has incorporated the natural inspiration for the design of the apartment in each and every aspect, including a range of interesting elements such as the beautiful hand painted silk wallpapers, which blend the use of luxury materials with bespoke craftsmanship and detailing.



COMFORT AND FUNCTION

The media and family room is yet another secluded, comfortable space that allows you to disconnect from the everyday world and instead connect with your loved ones. You can enjoy a variety of entertainment options in the ultimate luxury style.



RESIDENCES FEATURES

HIGHLY PERSONALIZED

OPEN FLOOR PLANS

COMPLETE PRIVACY

FULLY AUTOMATED TECHNOLOGY

FINEST MATERIALS

STATE-OF-THE-ART APPLIANCES



Starting with absolute comfort and privacy, your home at One Palm is built around you – minimalist in approach yet ready to be custom-tailored into a highly personalized statement of sanctuary, relaxation and inspiration.



The remarkable sense of expansiveness inside each home at One Palm lends an air of palatial splendour. Yet the sweeping, open floor plans have been ingeniously designed to seamlessly accommodate areas of complete privacy. Bedrooms, bathrooms and other personal areas are cleverly separated from public spaces, providing a perfect balance of openness and seclusion.

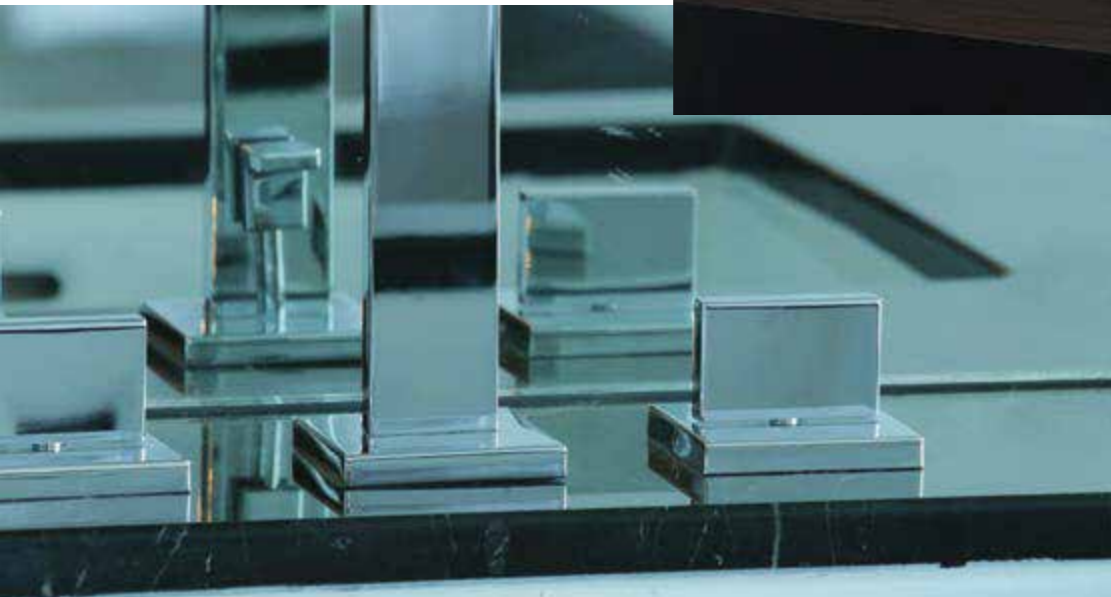




PREMIER PERFORMANCE

Every home at One Palm is outfitted with state-of-the-art appliances from industry leaders including Gaggenau and Sub Zero. Challenging the established and breaking the mold to pave the way for new, innovative ideas, these appliances offer premier performance with a sleek aesthetic. In unison they create a chic, tailored, modern and totally comfortable home that is the definition of timeless.





Pure and Simple

REFINED DETAILS



AMENITIES FOR LUXURY CONNOISSEURS

The residences at One Palm are the most opulent in a city acclaimed for extravagance. Destined to change both the landscape of Dubai and modern luxury living forever, this is your membership to the world's most exclusive club.



Spa

Spa Massage, grooming and facial treatment services are at your beck and call at the One Palm Spa.

Lap Pool

Hit the lanes at the 25-meter lap pool. Situated in the lower level of One Palm, the indoor pool area can be opened up to let in the glorious natural backdrop of the grounds.

Vitality Pool

The ultimate in relaxation and rejuvenation.

Indoor Cinema

A sumptuously-appointed, state-of-the-art indoor cinema lets residents enjoy all sorts of films and programs in absolute comfort.

Outdoor Pool

Enjoy extraordinary refreshment relaxing by One Palm's grand 800 square meter pool.

Outdoor Cinema and Barbecue Area

A versatile outdoor area offers residents a truly special gathering space. Enjoy a weekend barbecue or a night under the stars - all while your favourite movie plays on the outdoor cinema.

Fitness Centre

State-of-the-art fitness equipment for residents to enjoy.

Business Centre, Library and Meeting Rooms

Everything you need for work, research and enjoyment.

Playroom

The ideal place to bring your little ones to play and socialize.





Toll Free: **800 326 800**

Email: info@famproperties.com

Web: www.famproperties.com